

## What is the Ultimate Boot CD for Windows?

UBCD4Win is a bootable recovery CD that contains software used for repairing, restoring, or diagnosing almost any computer problem. Our goal is to be the most complete and easy to use free computer diagnostic tool. Almost all software included in UBCD4Win are freeware utilities for Windows®. Some of the tools included are "free for personal use" copies so users need to respect these licenses. A few of the tools included in UBCD4Win are paid for and licensed software owned by UBCD4win. On occasion we work with software companies/authors for permission to include their software in our download or have requested their software better support PE. Users can freely share copies of UBCD4Win with friends but selling UBCD4Win for a profit is not acceptable. We have worked hard for many years helping people for free with this project, others should not make money from our hard work. If you are a dialup user having a hard time downloading UBCD4Win, please visit our [ordering](#) page. UBCD4Win is based on Bart's PE©. Bart's PE© builds a Windows® "pre-install" environment CD, basically a simple Windows® XP booted from CD. UBCD4Win includes network support and allows you the ability to modify NTFS volumes, recover deleted files, create new NTFS volumes, scan hard drives for viruses, etc. Our download includes almost everything you need to repair your system problems. This project has been put together to be the ultimate recovery cd and not a replacement OS (Operating System). Please visit the "[List of Tools](#)" page for a complete list of what is included in the latest version of UBCD4Win.

There are requirements for building this CD which can and may make it difficult for everyone to build the project. Please understand that these requirements and restrictions are due to copyright laws, etc. When starting this project I wanted it to be as easy as possible. I wanted it to be a simple ISO file download just like the original Ultimate Boot CD. I had to weigh the ease of build and functionality very carefully. After much thought and research I decided that Bart's PE© was the best way to accomplish this task. That decision required a different type of build and more steps for the end user. Yes more complicated, but I prefer to think of these additional steps in a positive way. We provide detailed instructions and our forum for help. Inexperienced users will feel a sense of accomplishment and gain knowledge when they successfully build the CD.

Remember that we are a freeware tool. We still have hosting and other costs to pay every month. If UBCD4Win has helped you and you are able to, please consider donating.

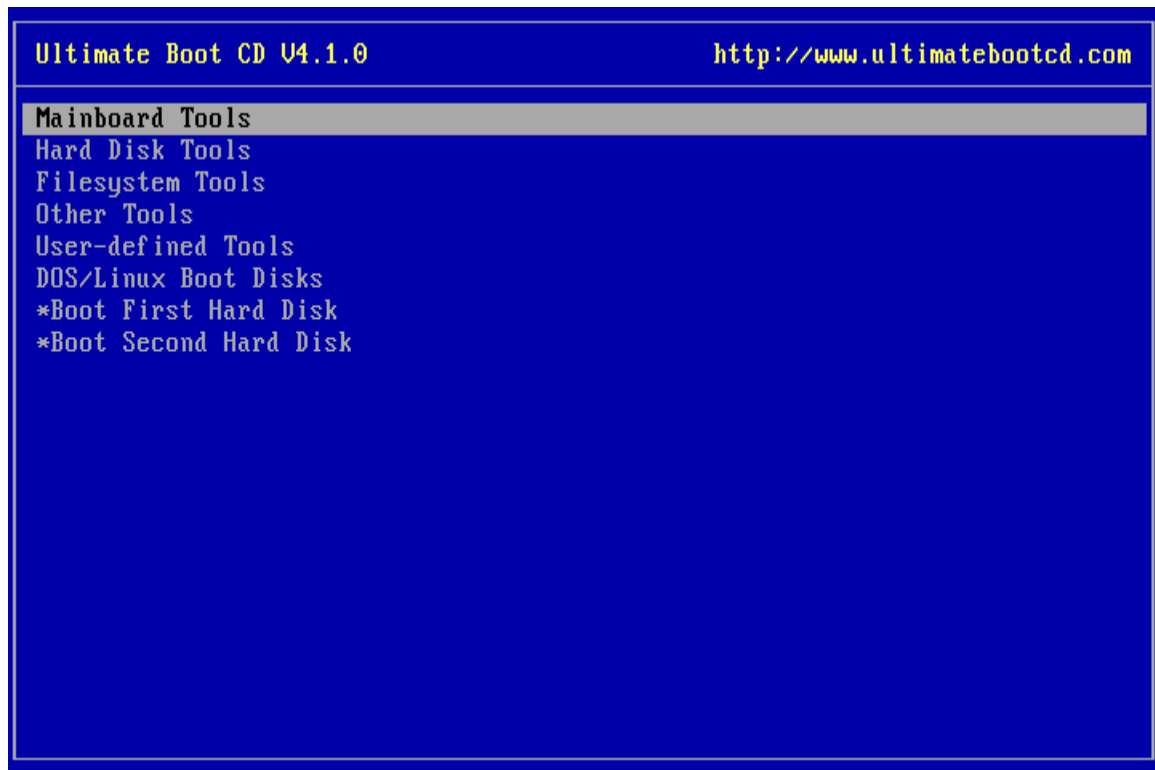


### Overview

*Current release: 4.1.1*

*For those of you interested in a Windows version of the Ultimate Boot CD, you might want to check out **this project** initiated by Ben Burrows.*

***Ultimate Boot CD is completely free for the download, or could be obtained for a small fee. If you had somehow paid a ridiculous amount of money for it, you have most likely been fleeced. The least you could do is to make as many copies of the official UBCD and pass it to your friends, relatives, colleagues or even complete strangers to minimize the per unit cost of your loss!*** 😊



You need the Ultimate Boot CD if you want to:

**Run floppy-based diagnostic tools from CDROM drives.** More and more PCs are shipped without floppy drives these days, and it is such a royal pain when you need to run diagnostic tools on them.

**Free yourself from the slow loading speed of the floppy drive.** Even if you do have a floppy drive, it is still much much faster to run your diagnostic tools from the CDROM drive, rather than wait for the tool to load from the floppy drive.

**Consolidate as many diagnostic tools as possible into one bootable CD.**

Wouldn't you like to avoid digging into the dusty box to look for the right floppy disk, but simply run them all from a single CD? Then the Ultimate Boot CD is for you!

**New! Run Ultimate Boot CD from your [USB memory stick](#).** A script on the CD prepares your USB memory stick so that it can be used on newer machines that supports booting from USB devices. You can access the same tools as you would from the CD version.

When you boot up from the CD, a text-based menu will be displayed, and you will be able to select the tool you want to run. The selected tool actually boots off a virtual floppy disk created in memory.

### Tools currently included in the Ultimate Boot CD are:

Name of Tool	Version	Notes
<b>CPU Tests</b>		
<b>CPU Burn-in</b>	1.00	<i>The Linux version which is included in UBCD is at V1.00. V1.01 applies to Windows only.</i>

<b>Mersenne Prime Test</b>	23.5.2	<i>Need to update Mersenne Prime Test boot disk to allow user to manually override the decision (based on automatic CPU detection) to run V23/V24. The original maintainer does not have time to do this, so if you are interested to help, please contact me directly.</i>
<b>StressCPU</b>	24-Oct-05	<i>V2.0 is out, but I need someone to either update Adrian's combo Linux loader (/boot/cpustres*) or send me a new one. Please email me directly if you can help.</i>
<b>Memory Tests</b>		
<b>Memtest86</b>	3.3	
<b>Memtest86+</b>	1.70	
<b>Windows Memory Diagnostic</b>	n/a	
<b>DocMem RAM Diagnostic</b>	3.1beta	
<b>TestMem4</b>	4	
<b>Peripherals Tools</b>		
<b>Parallel port detection and test utilities</b>	1.45	
<b>ATAPI CDROM Identification</b>	2.22	
<b>CHZ Monitor-Test</b>	1.01	
<b>CPU Information</b>		
<b>Intel Processor Frequency ID</b>	7.2.20041115	
<b>Intel Processor Identification Utility</b>	3.3.20061218	
<b>x86test</b>	0.10a	

<b>System Information</b>		
<b>AIDA16</b>	2.14	<i>Discontinued</i>
<b>NSSI</b>	0.59.14	
<b>PC-Config</b>	9.33	
<b>ASTRA</b>	5.31	<i>Demo version</i>
<b>PCISniffer</b>	1.5	
<b>PCI</b>	1.1	<i>pcidevs.txt: 13 Feb 2006</i>
<b>CTIA</b>	2.7	
<b>DIMM_ID</b>	3.01	
<b>Benchmark Tools</b>		
<b>System Speed Test 32</b>	4.78	
<b>3D Benchmark VGA</b>	1.0	
<b>CPU Benchmark</b>	n/a	
<b>CD Index</b>	1.1	
<b>QwikTest</b>	n/a	
<b>BIOS Tools</b>		
<b>BIOS</b>	1.35.0	
<b>WipeCMOS</b>	1.2	
<b>CMOSPWD</b>	4.8	

<b>!BIOS</b>	3.20	
<b>Hard Disk Installation Tools</b>		
<b>MaxBlast 5 (Maxtor)</b>	5.0	
<b>DiscWizard 2003 (Seagate)</b>	10.45.06	
<b>Disk Manager (Seagate)</b>	9.56a	
<b>Disk Manager (Samsung)</b>	10	
<b>Hard Disk Diagnostic Tools</b>		
<b>Drive Fitness Test (IBM/Hitachi)</b>	4.09	
<b>Diagnostic Tool (Fujitsu)</b>	6.90	
<b>SeaTools for DOS (Seagate/Maxtor)</b>	1.09	
<b>SHDIAG (Samsung)</b>	1.25	
<b>HUTIL (Samsung)</b>	1.21/2.03	<i>From soeren: "HUTIL 2.00 lacks the possibility to view the SMART values and it appears to be a lot slower than 1.21. It's only needed for the newest Samsung drives, the "older" ones still work with 1.21."</i>
<b>DLG Diagnostic (Western Digital)</b>	4.15/5.04c	<i>V5.x has been reported not to work on some older machines, so V4.15 has been included as a backup.</i>
<b>Data Lifeguard (Western Digital)</b>	11.2	
<b>SCSIMax (Maxtor/Quantum)</b>	1.21	
<b>GWSCAN (Gateway)</b>	3.15/5.09	<i>V5.x is for IDE hard drives larger than 10GB. For IDE hard drives 10GB or smaller, V3.15 is recommended.</i>
<b>ESTest (ExcelStor)</b>	4.20	
<b>Salvation HDD Scan and Repair</b>	3.0	<i>Demo version</i>

<b>MHDD32</b>	4.6	
<b>ViVARD</b>	0.4	
<b>HDATA2</b>	4.52	<i>For personal use only</i>
<b>Hard Disk Device Management Tools</b>		
<b>Feature Tool (IBM/Hitachi)</b>	2.05	
<b>AMSET (Maxtor)</b>	4.00	
<b>MAXLLF (Maxtor)</b>	1.1	
<b>UATA100 (Seagate)</b>	3.06	
<b>Ultra ATA Manager (Western Digital)</b>	June, 2003	
<b>SUTIL</b>	1.01	
<b>ESFeat (ExcelStor)</b>	2.10	
<b>ATA Password Tool</b>	1.1	
<b>SMARTUDM</b>	2.00	
<b>ATAINF</b>	1.3m	
<b>Hard Disk Wiping Tools</b>		
<b>Darik's Boot and Nuke</b>	1.0.7	
<b>CopyWipe</b>	1.14	
<b>Active@ KillDisk Free Edition</b>	4.1	<i>Free Edition. Supports "One Pass Zeros" method only.</i>
<b>PC INSPECTOR e-maxx</b>	0.95	<i>Actual version is 0.95 Build 775, but is referred to as 1.0 on product website.</i>

<b>HDDErase</b>	3.1	
<b>Hard Disk Cloning Tools</b>		
<b>HDClone (Free Edition)</b>	3.2.6	
<b>g4u</b>	1.17	<i>Unable to integrate latest version of g4u (does not like mkisofs -N flag, which is required for integrating Windows CD). If anyone knows of a workaround, please email me.</i>
<b>UDPcast</b>	n/a	
<b>PC INSPECTOR clone maxx</b>	0.95 Build 769	<i>Actual version is 0.95 Build 769, but is referred to as 1.0 on produce website.</i>
<b>XXCOPY</b>	2.93.1	<i>Latest version on website says 2.95.3, but XXCOPY16.EXE still shows 2.93.1.</i>
<b>EaseUs Disk Copy</b>	1.0	
<b>COPYR.DMA</b>	Build 013	
<b>CopyWipe</b>	1.14	
<b>Hard Disk Low-Level Editing Tools</b>		
<b>Disk Editor</b>	3.0	
<b>DISKMAN4</b>	4.01	
<b>PTS DiskEditor</b>	1.04	
<b>Partition Tools</b>		
<b>Ranish Partition Manager</b>	2.40	<i>Using stable version because V2.44 is beta and reported to be buggy.</i>
<b>Free FDISK</b>	1.3.0	

<b>SPFDISK (Special FDISK)</b>	2000-03t	
<b>XFDISK (Extended FDISK)</b>	0.9.3 beta	
<b>Cute Partition Manager</b>	0.9.5	<i>Although website says 0.9.6, program version and history log both says 0.9.5.</i>
<b>PTDD Super Fdisk</b>	1.0	
<b>Partition Resizer</b>	1.3.4	
<b>FIPS</b>	2.0	
<b>Active@ Partition Recovery</b>	2.1.1	<i>Demo version</i>
<b>TestDisk</b>	6.5	
<b>Partition Saving</b>	3.40	
<b>MBRtool</b>	2.3.100	
<b>MBRWork</b>	1.07b	
<b>Boot Managers</b>		
<b>Smart BootManager</b>	3.7.1	
<b>Gujin</b>	1.9	
<b>GAG</b>	4.8	
<b>XOSL</b>	1.1.5	
<b>Super Grub Disk</b>	0.9590	
<b>File Tools</b>		
<b>DOS Navigator</b>	6.4.0	
<b>File Maven</b>	3.5a	

<b>Necromancer's DOS Navigator</b>	2.15 Build 4000	
<b>D-Browse</b>	1.24	<i>Must enable long filename support for it to work.</i>
<b>Volkov Commander</b>	4.99.08 alpha	<i>Or you can just type "vc" at the DOS prompt to launch this file manager.</i>
<b>Eraser for DOS</b>	5.82	
<b>NTFS Tools</b>		
<b>Offline NT Password &amp; Registry Editor</b>	070409	
<b>Active NTFS Reader for DOS</b>	1.0.1	
<b>EditBINI</b>	1.01.1	
<b>Boot Partition</b>	2.60	
<b>Avira NTFS4DOS Personal</b>	1.9	<i>For personal use only</i>
<b>Anti-Virus/Malware Tools</b>		
<b>F-Prot Antivirus for DOS</b>	3.16f	<i>For personal use only. Virus definition: 4 May 2007.</i>
<b>McAfee Antivirus Scanner</b>	4.40.0	<i>For personal use only. Virus definition: 3 May 2007.</i>
<b>BugHunter</b>	2.1	<i>Note that C:\ has to be accessible and writable, otherwise <b>BUGHUNT.INI</b> must be edited and the line <b>C:\BUGHUNT.DAT</b> changed to <b>X:\BUGHUNT.DAT</b>, where X is the drive letter of the RAM disk.</i>
<b>Network Tools</b>		
<b>Arachne WWW Browser</b>	1.90	

<b>NetCopy</b>	0.2	
<b>FileLink</b>	3.01	<i>This program is part of Caldera OpenDOS V7.03</i>
<b>QNX Demo Browser (network + modem version)</b>	4.00	
<b>DOSRDP</b>	2.0/XP	
<b>DOS Boot Disks</b>		
<b>FreeDOS Boot Disk</b>	3.40	<i>This is named <code>dosubcd.igz</code> under the <code>images</code> subdirectory, and is the default boot disk for most DOS programs under <code>dosapps</code>. You can easily make other DOS disk images your default by renaming the appropriate image file (eg. <code>lzubcd.igz</code>) to <code>dosubcd.igz</code>.</i>
<b>LZ-DOS Boot Disk</b>	3.40	
<b>OpenDOS Boot Disk</b>	3.40	<i>Won't work in a virtual machine, but will work on a physical machine.</i>
<b>MS-DOS Boot Disk</b>	3.40	<i>By default, this is not included in UBCD due to its commercial nature. But you can easily download and place it under the <code>images</code> subdirectory in order to use it.</i>
<b>NwDsk: NetWare Boot Disk</b>	3.40	<i>You can run TinyHost by choosing the "tinyhost" profile after booting. Then you will be able to connect remotely from any Java-capable machine with the command <code>java -jar tinyclient.jar x.x.x.x password</code> (password defaults to 'nwsk').</i>
<b>MSRRC: Bart's Network Disk Clone</b>	3.35	

## Linux Boot Disks

<b>Tom's Boot Disk</b>	2.0.103	
<b>BasicLinux</b>	3.40	
<b>Trinux</b>	0.89	<i>The latest incarnation of the Trinux project is ubuntu<trinux>, but a stable release does not exist yet.</trinux></i>